



# *Barton Creek Crossing*



2800 Barton Creek Blvd.  
Austin, TX 78735

**PANACHE-USA.COM | LEASING • 512-656-1352**





# WATERLOO VETS ANIMAL HOSPITAL

A CLINIC YOU CAN TRUST CLOSE TO HOME

- Pet Wellness
- Vaccines & Preventatives
- Surgery
- Dentistry
- Allergy & Dermatology
- Internal Medicine





ABOUT

# BARTON CREEK



## BARTON CREEK COUNTRY CLUB

Relax, play, and connect at one of Texas' leading resorts and country clubs. With four sprawling golf courses among the best in the state, Barton Creek Country Club offers luscious grounds to perfect your technique and bond with family, friends, and colleagues close to home and the office. The club also features world-class spa and hotel facilities. Barton Creek Country Club is Austin's most exquisite destination for fitness, recreation, connecting, and relaxing.



## GREENBELT

Austin is known for its greenery and charming hill country landscapes. Find an escape from the busy, bustling world in the Barton Creek Greenbelt, one of the most convenient but beautifully preserved pockets of nature in Austin. The greenbelt is ideal for exploration, solace, adventure, connecting with nature, and more. The Barton Creek Greenbelt is one of Texas' most beautiful hidden gems.



## SHOPPING

Located near Barton Creek Square and the Hill Country Galleria, shopping options abound in Barton Creek. From high fashion to athleisure, Barton Creek offers something for everyone conveniently close to home and work.

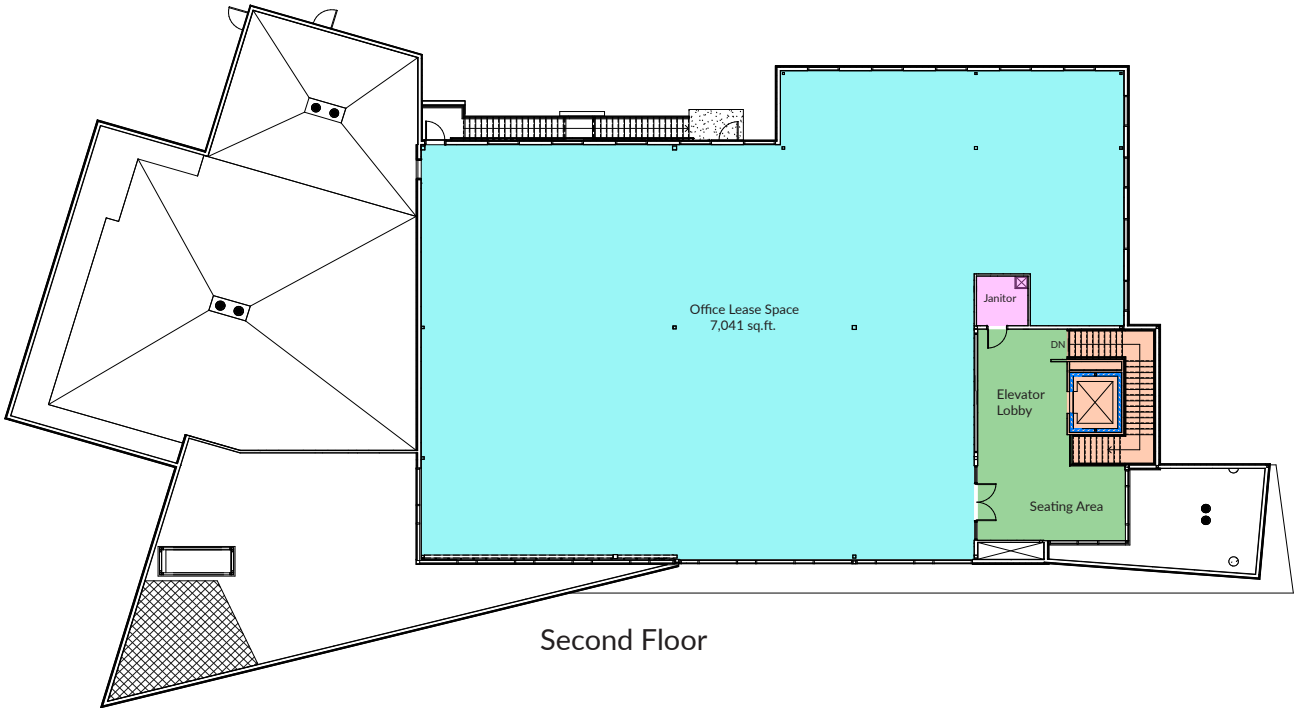
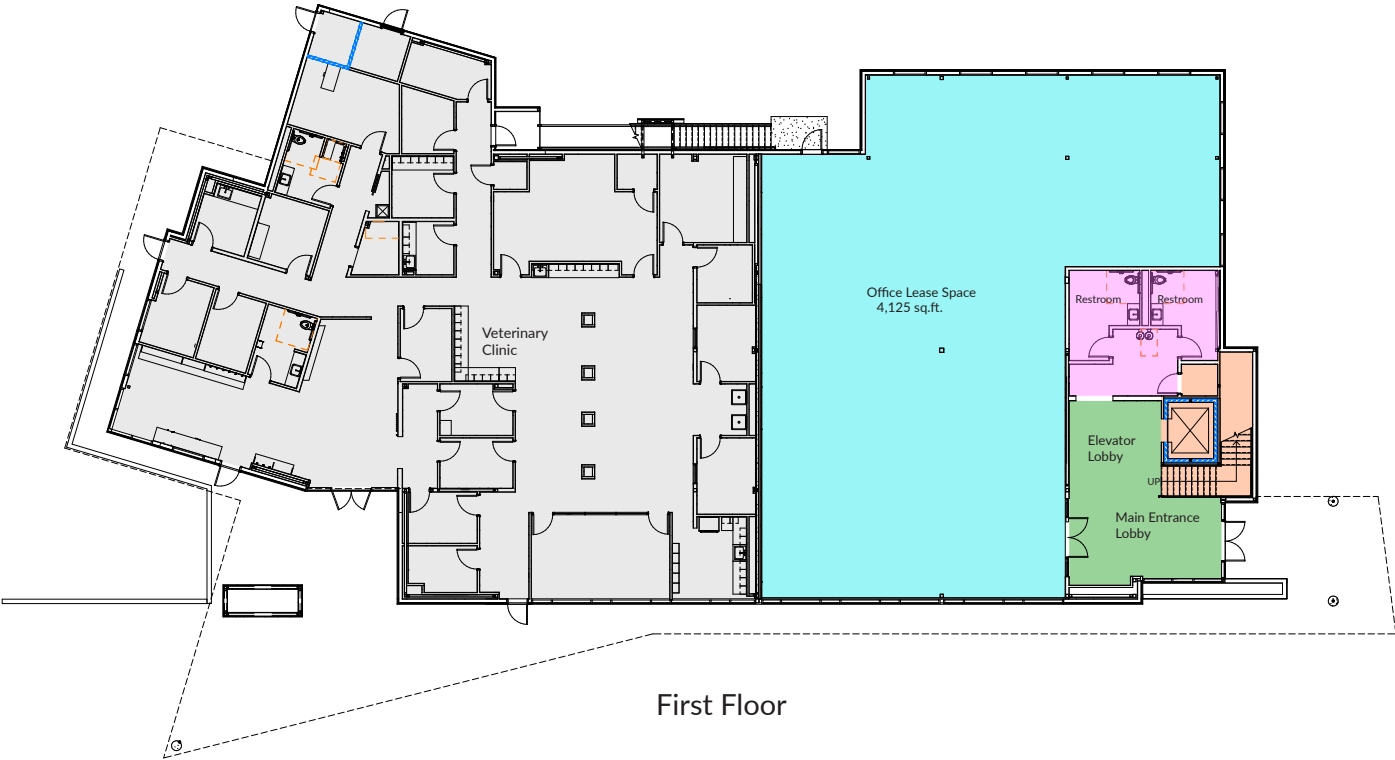


## NEARBY SCHOOLS

Barton Creek is near many of Austin's best schools. From elementary to upper schools, Barton Creek boasts quick access to nearly every leading school in the Austin area.

# BUILDING LAYOUT

2800 Barton Creek Blvd.  
Austin, TX 78735





# RENDERINGS



# RENDERINGS

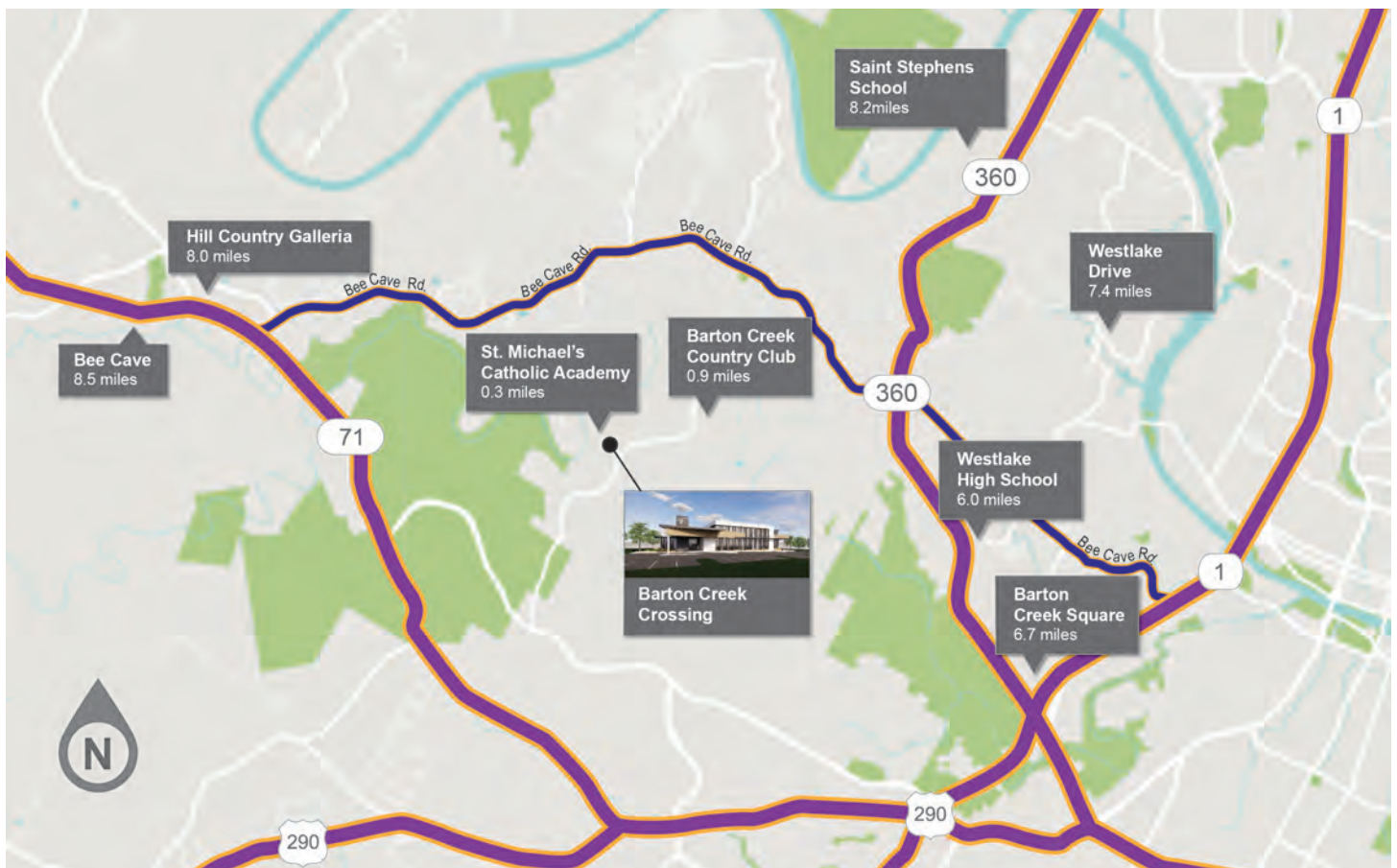




# RENDERINGS



# RENDERINGS







# *Barton Creek Crossing*

2800 Barton Creek Boulevard  
Austin, TX 78735

## **CONTACT US**

[www.panache-usa.com](http://www.panache-usa.com) | [info@panache-usa.com](mailto:info@panache-usa.com)

Leasing: 512-656-1352